

manor houses



design portfolio



manor houses



distinctive oak structures

The Border Oak manor house portfolio is a celebration of a unique architectural heritage. Inspired by the imposing estates that pepper the British landscape, these designs are handsome and deliberate yet approachable and comfortable. Distinctive design eccentricities provide intrigue and drama whilst natural materials soften the mass and profile of these large family homes. Whilst some are sprawling and majestic others adopt a more subtle aesthetic, reflecting perhaps an unfettered organic growth or change in status - as time and prosperity ebbed and flowed.

Each Border Oak design is bespoke, created individually for you and your requirements. Our houses are built with the very best of British craftsmanship - meeting and exceeding all industry regulations and standards. Beautiful and sustainable.

*Border Oak reserve the right to amend and alter designs to meet industry standards. All designs and intellectual property is protected under copyright. All rights reserved.

oakapple court

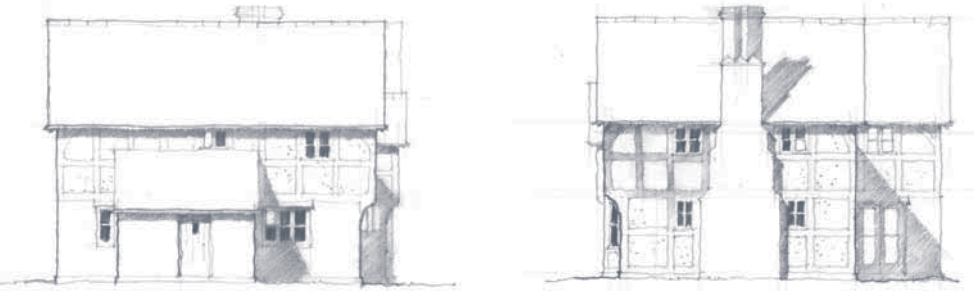
One of our most popular manor house designs. With a prominent entrance hall, jettied gable projections and feature floor length windows, it has many classical oak frame elements. It is also inherently flexible. The cross wings could be elongated, the ground floor could be opened or the materials could be combined to include masonry. Handsome, accessible and comfortable.

maximum external dimensions: 19.75m x 9.5m

gross external area: 248m²



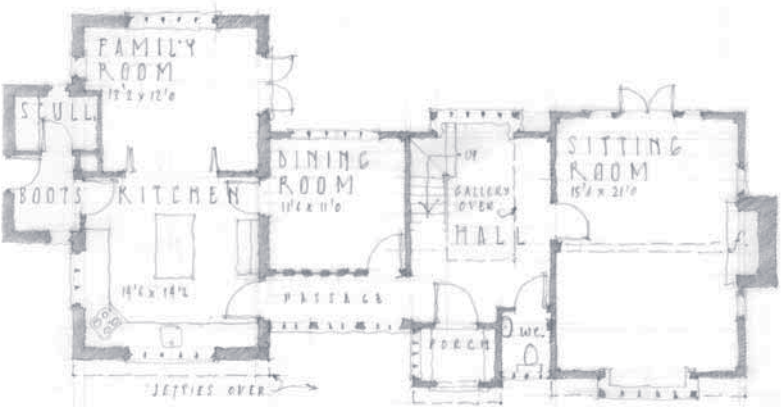
front elevation



side elevations



rear elevation



ground floor



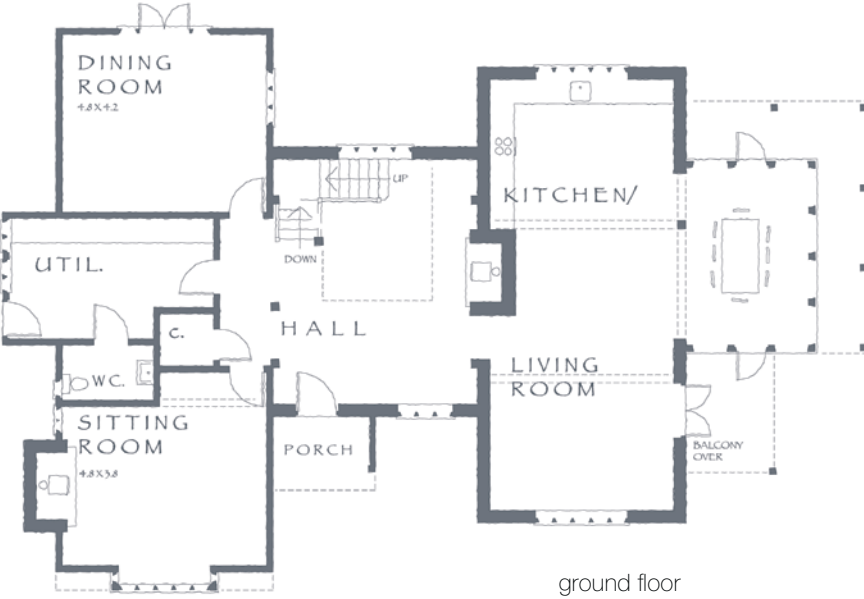
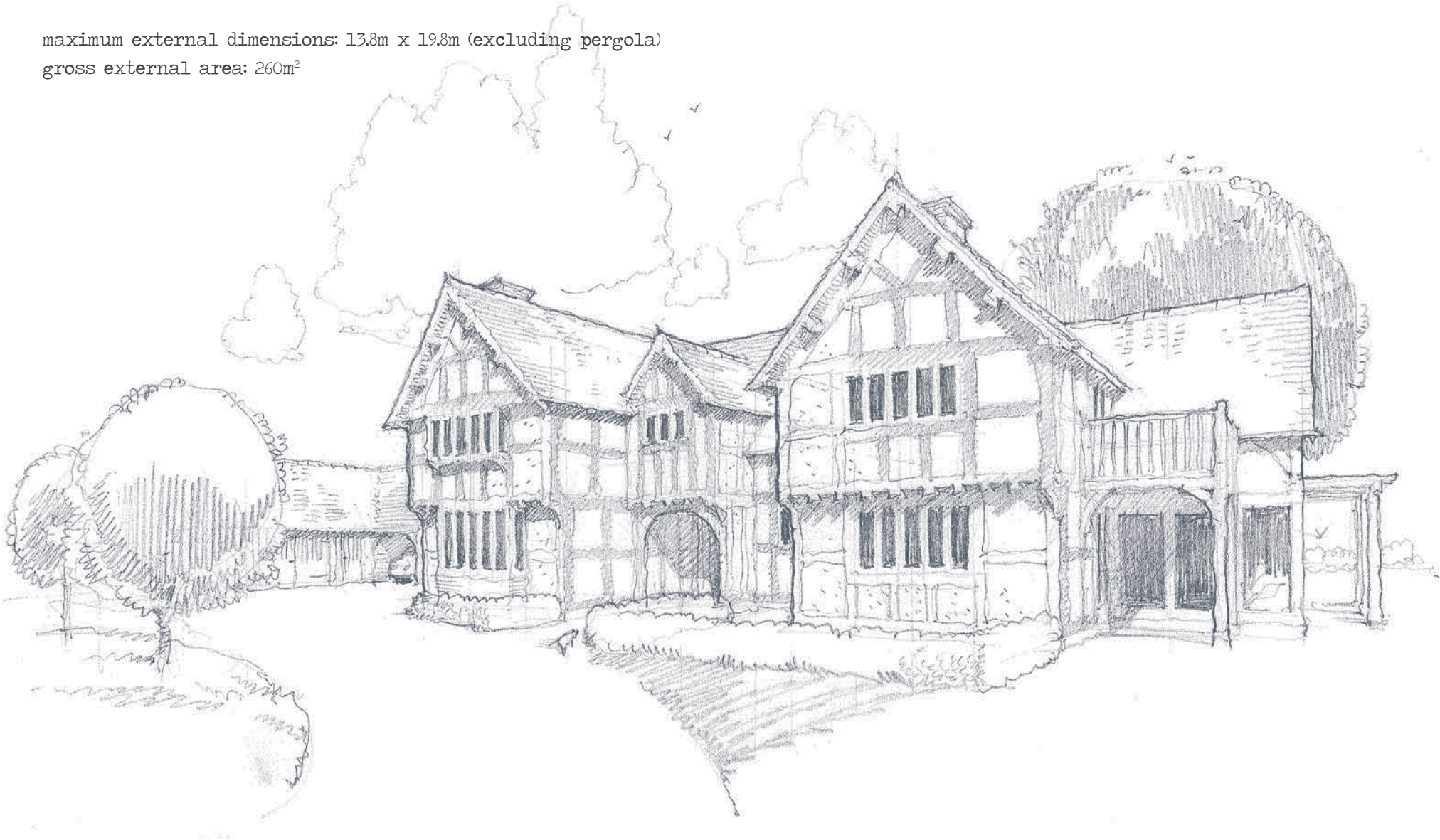
first floor

bearwood manor

A large central hall with a generous gallery landing forms the centrepiece to this spacious family home. The dining space has full length glazing on all sides, flooding the kitchen/family room with light. The master bedroom has a spacious en suite, balcony, feature oak trusses and a secret ladder to a mezzanine in the roof space.

maximum external dimensions: 13.8m x 19.8m (excluding pergola)

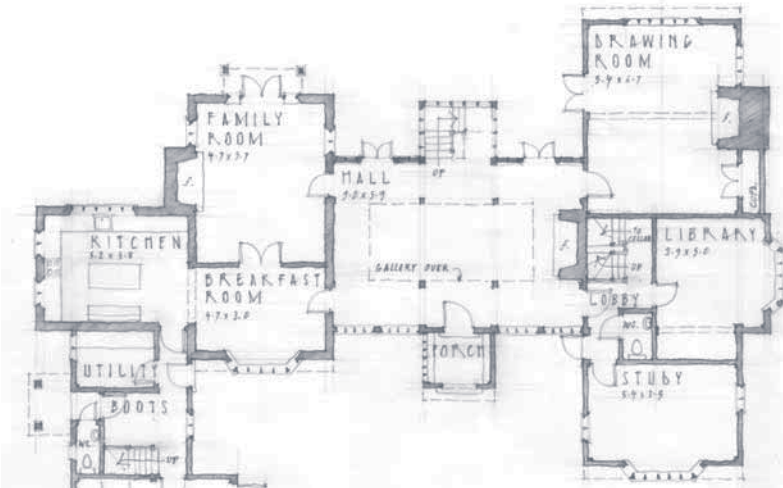
gross external area: 260m²



broxwood house

Large but considered, this house is generous and intriguing. The height is softened by bay and oriel windows, deep stone plinths, long galleries and towering chimney spires which provide interest and punctuation. The impressive frontage is further emphasised by the attached coach house.

maximum external dimensions: 24.5m x 27m
gross external area - house: 593m² | garage/studio: 99m²



ground floor



rear elevation



front elevation



first floor



attic

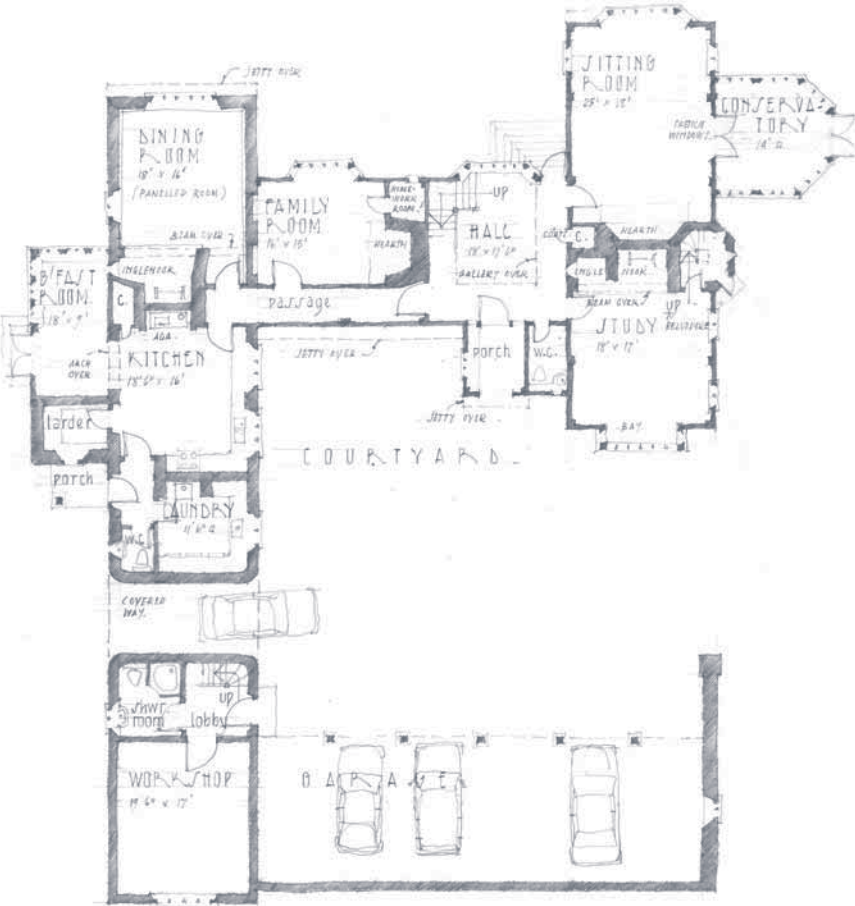
maclaren court

Vast, imposing and aspirational. Soaring ornamental chimney stacks deliberately follow the apex of the jettied gables to create a perpendicular energy which contrasts with the length of the elevations. Every conceivable room could be incorporated within the main house or the generous outbuilding. If further space is needed there are potential attic rooms or cellar.

maximum external dimensions: 31m x 17m
gross external area: 760m² | garage 107m² (excluding all attic spaces)



rear elevation



ground floor



first floor

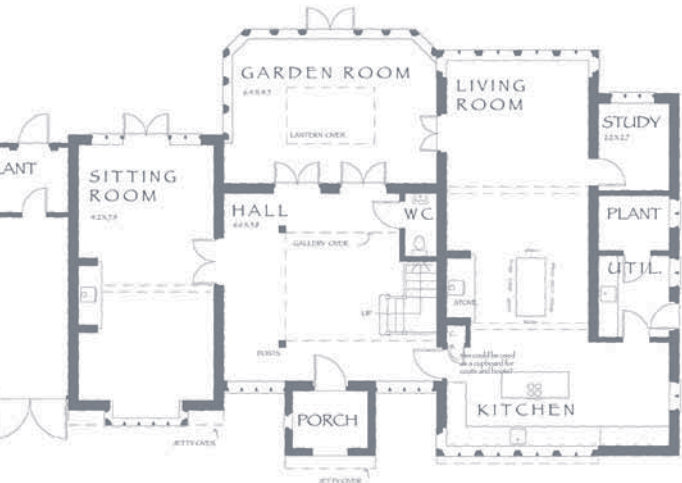


side elevation

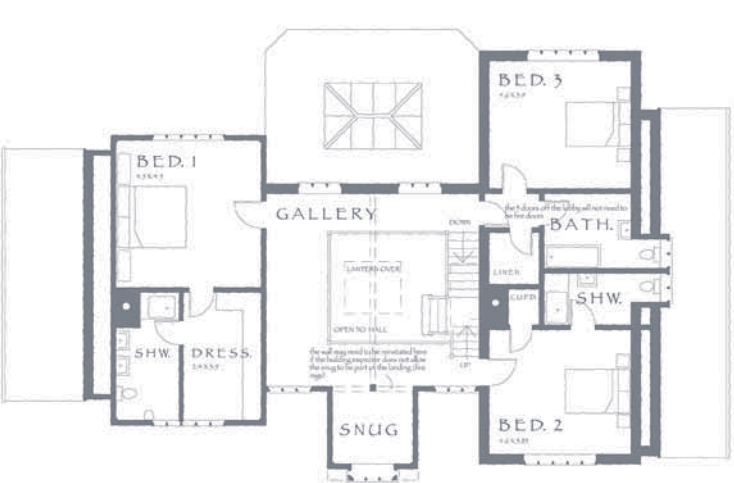
arrow house

Originally conceived for a relatively narrow plot, this house has generous height and depth. The ground floor rooms have an interconnecting flow around a large central hall which leads onto a beautiful garden room with glass roof lantern.

maximum external dimensions: 13.25m x 22m
gross external area - house: 391m² | attic: 65m²



ground floor



first floor



attic



front elevation



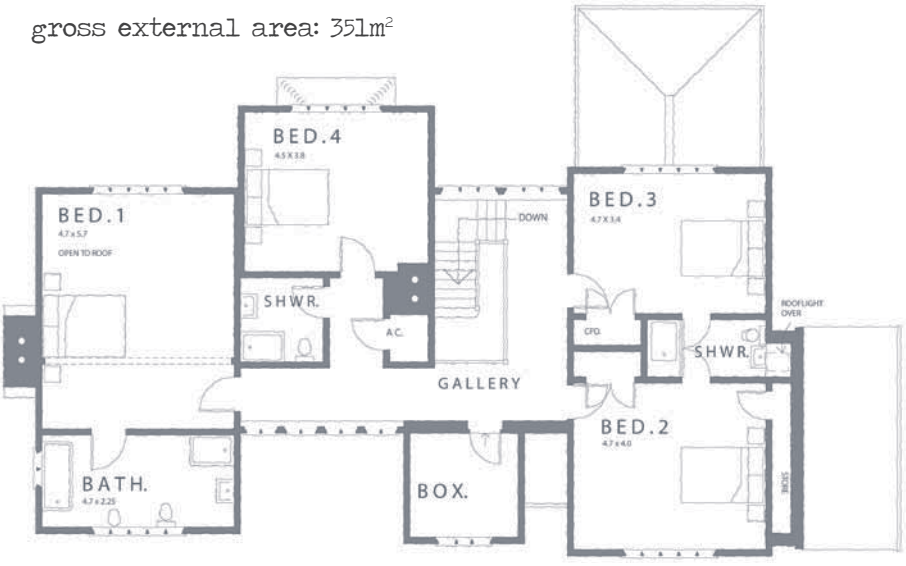
rear elevation



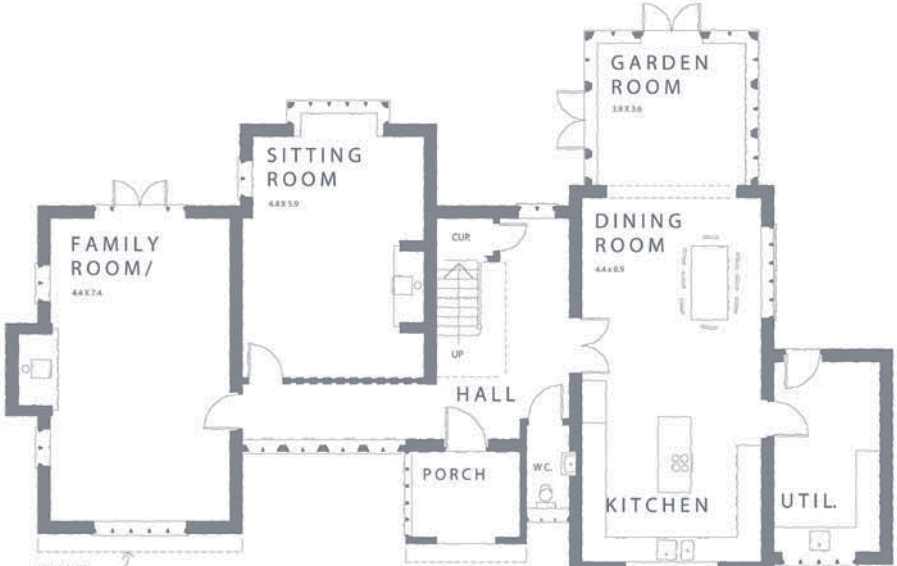
lower burton manor

Designed for a young family, this home possesses a welcoming informality. Each room is spacious and with purpose. The large windows ensure the house is light and present opportunity to enjoy the view at every turn. The blend of brickwork and oak framing will weather gracefully against the landscape and wider setting.

external dimensions: 13.2m x 19.8m
gross external area: 351m²



first floor



ground floor



front elevation



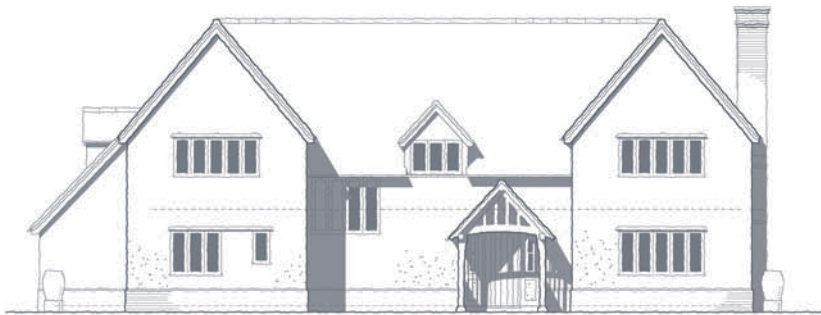
rear elevation



nash house

Inspired by many of the principles of the Arts and Crafts movement, Nash House is simple, elegant, vernacular and strong. The ground floor rooms are approached from the linear entrance hall which leads to an elongated landing. Here, SIPs panels are faced in lime render with a deep brick plinth. The subtle internal oak frame with decorative bracing is introduced by the intricate Border Oak porch.

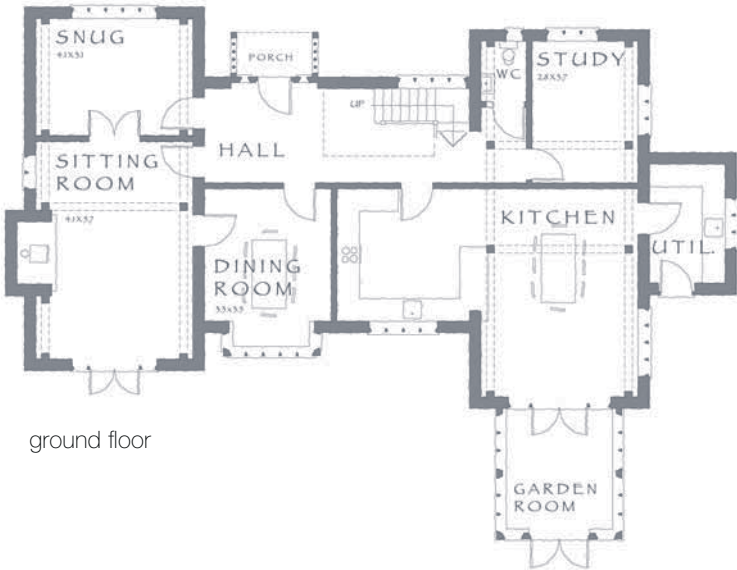
maximum external dimensions: 14m x 19.7m
gross external area: 306m²



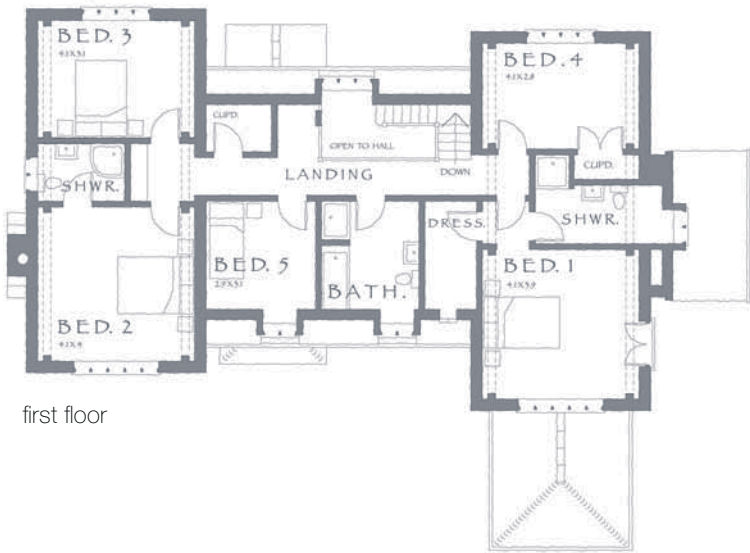
front elevation



rear elevation



ground floor

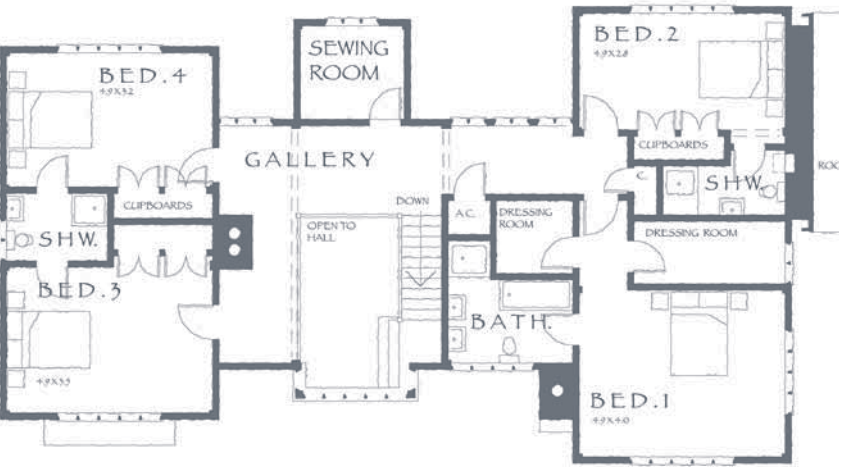


first floor

staunton hall

Double fronted, broad and long. A back-to-back fireplace warms both the impressive drawing room and the galleried dining hall which connects both wings of this house. Each bedroom is well appointed with private bathrooms, dressing rooms and cupboards - allowing the oak frame to work to its fullest potential.

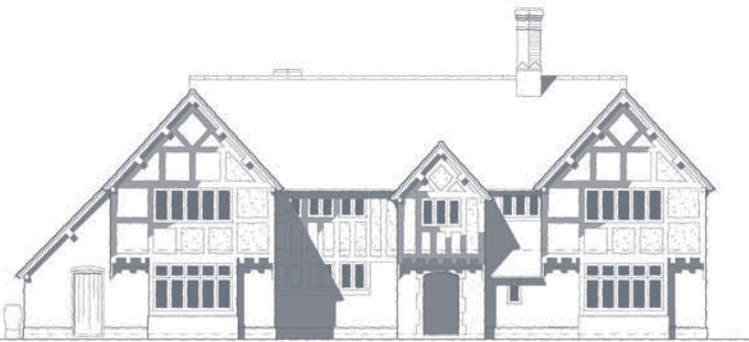
external dimensions: 10.7m x 21.75m
gross external area: 345m²



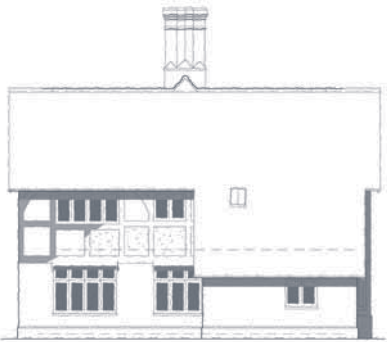
first floor



ground floor



front elevation



side elevation

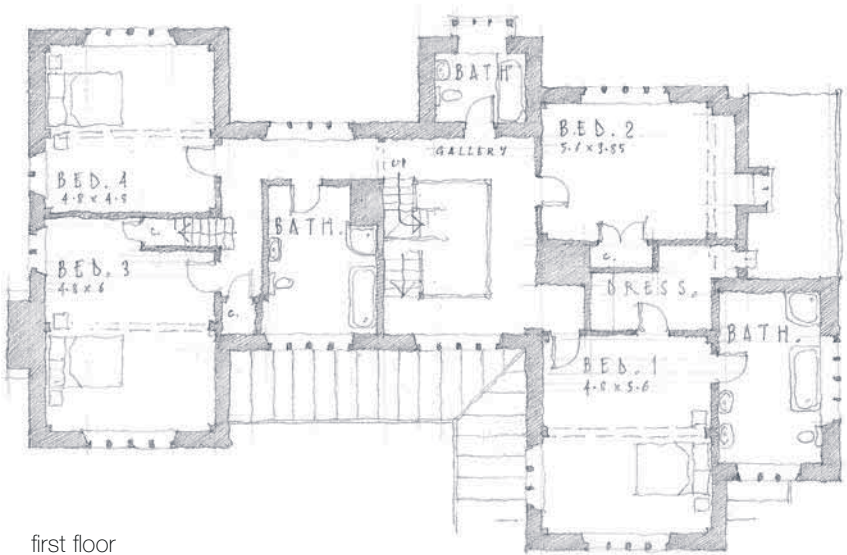


rear elevation

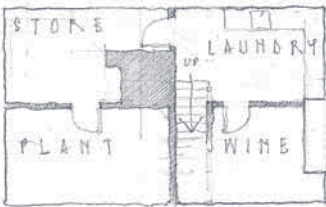
titley court

Despite its size Titley Court is intricate and personal. Brimming with architectural detail the house exudes character and confidence without ostentation. Stone elevations, decorative bargeboards, and a large oak verandah create texture which will embrace the tones and colours of passing seasons. Internally there is a comfortable collection of large spaces balanced by the closest attention to detail. The attic and basement ensure every demand of family life is effortlessly met.

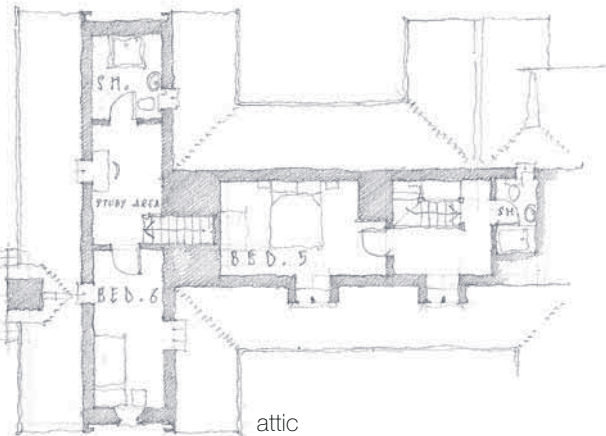
external dimensions: 15m x 24m (excluding verandah)
gross external area - house: 356m² | attic: 90m² | basement: 49m²



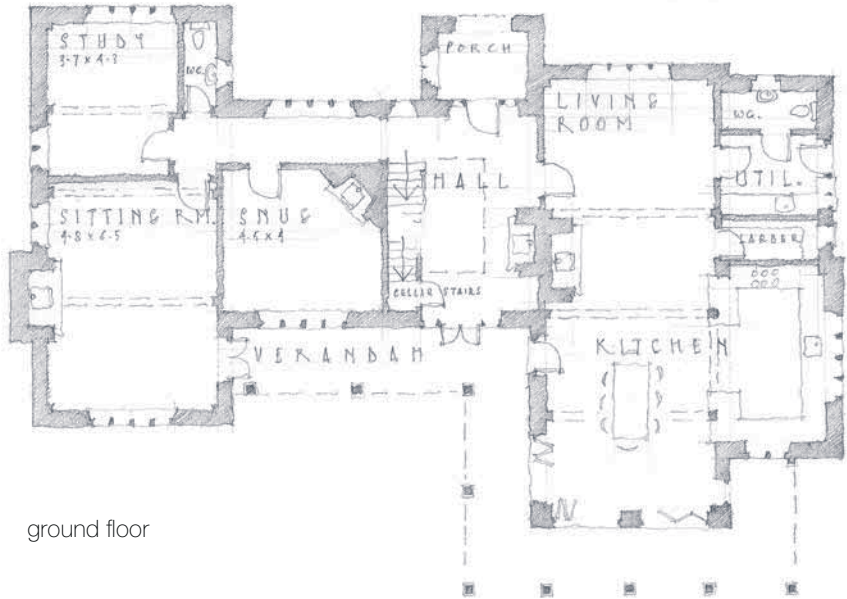
first floor



cellar



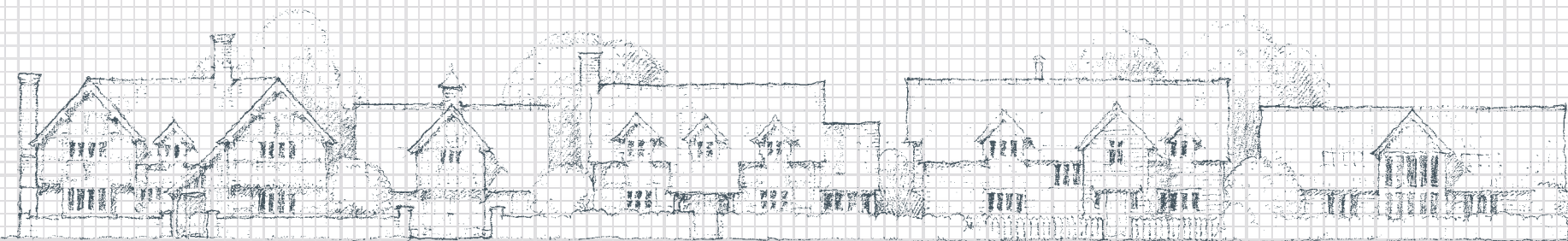
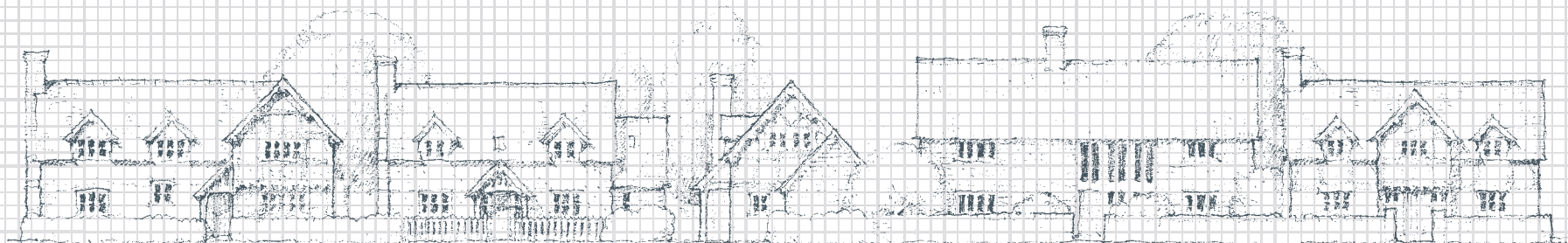
attic



ground floor



rear elevation



border oak
design & construction limited

Kingsland, Leominster, Herefordshire HR6 9SF England | www.borderoak.com
t: 01568 708 752 | f: 01568 708 295 | e: sales@borderoak.com