

border oak
our workshops

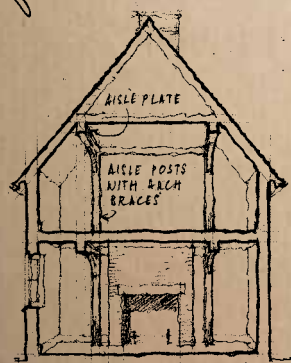


Border Oak workshops

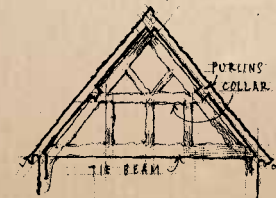
Our traditional carpentry workshops can produce between one and two bespoke oak houses a week. The highly skilled master craftsmen use medieval carpentry techniques revived by Border Oak after being lost in the early 19th century.

Our carpenters are trained to interpret state-of-the-art CAD frame design drawings issued by our dedicated in-house technical design team - combining the artisan skills of a master craftsman with cutting-edge computer aided design technology.

The oak is selected (any timber that fails to meet our rigorous high standards is discarded) and 'marked out' by hand in accordance with the working drawings, in preparation for cutting and finishing - ensuring that the workshops are efficient but also diligent.

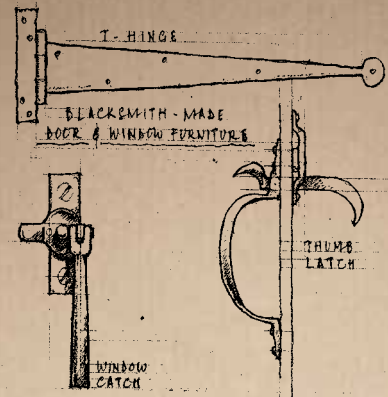


A TYPICAL 1 1/2 STOREY AISLE FRAME

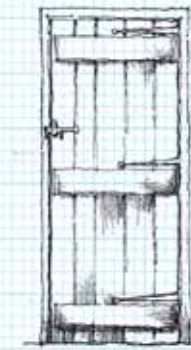


A TYPICAL QUEEN-POST TRUSS

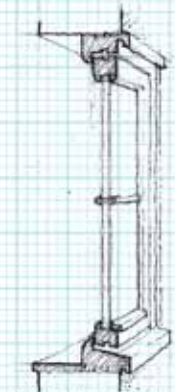
In a good year our carpenters will work through around 45 chisels - ranging from 38mm to a tiny gouge (for inscribing carpenters' tags).



LOVE WOOD



INTERNAL LEDGED & BRACED DOOR



TYPICAL THREE WINDOW WITH FLUSH CASEMENTS

Our workshop manager and deputy manager have more than 34 years service to Border Oak - starting as apprentices and now managing a team of 20, crafting frames destined for sites across the world. No machine can compete with the care, attention and accuracy lavished on our frames.

We have deliberately kept our carpentry machinery minimal - most of it dates (as do our best loved colleagues) from the 1950s and yet performs admirably.

All of our frames are made and finished by hand you can select the final beam finish - either flat planed or adzed. All edges are either chamfered or drawknifed. The finish is so attractive that we do not recommend sandblasting in situ - just a light acid wash with oxalic acid (made from rhubarb stems) and some elbow grease.

Simon, our workshop manager, has his own distinctive library of carpenters' tags - which are used to annotate the oak pieces for identification. Based loosely on Roman numerals, they are an important element in the history of oak framing. From his 50 or so motifs he will devise an individual combination to ensure each frame is truly unique.



Crafted with love
in Herefordshire

craftsmanship



Border Oak Design and Construction
Kingsland
Leominster
Herefordshire
HR6 9SF
t: 01568 708 752 f: 01568 708 295
e: sales@borderoak.com
www.borderoak.com

